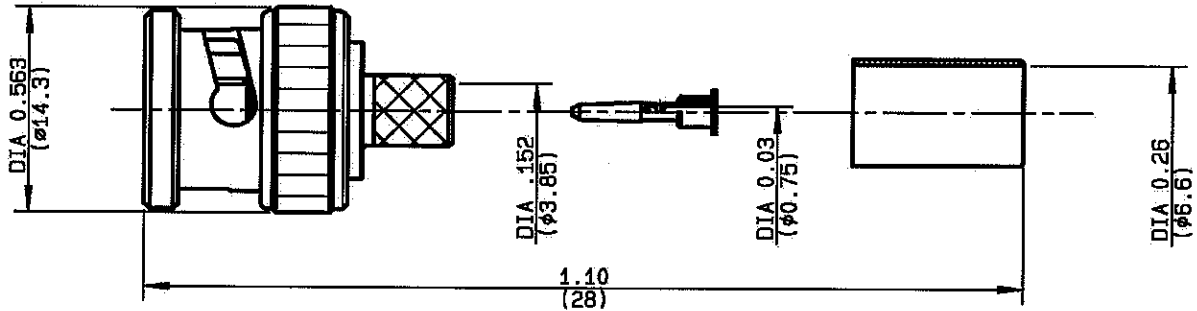


**STRAIGHT PLUG CRIMP TYPE
CABLE 6/75 D - PACK. 100**

**R142.098.170
SERIES BNG 75-COM**



NOMINAL IMPEDANCE	75 Ω	CABLES : BICC T3304
FREQUENCY RANGE	0-1.5 GHz	
TEMPERATURE RATING	-35/+70 °C	
V.S.W.R	NA + 0 x F(GHz)Maxi	
RF INSERTION LOSS	NA √F(GHz) dB Maxi	
VOLTAGE RATING	500 V _{eff} Maxi	
DIELECTRIC WITHSTANDING VOLTAGE	1500 V _{eff} Mini	
INSULATION RESISTANCE	5000 MΩMini	OTHERS CHARACTERISTICS
HERMETIC SEAL	NA Atm.cm ³ /s	CABLE RETENTION
LEAKAGE (pressurized only)	NA	136 N Mini
MECHANICAL DURABILITY	100 Cycles	CENTER CONTACT RETENTION
WEIGHT	8 gr	Axial force - mating end
SPECIFICATION		10 N Mini
		Axial force - opposite end
		10 N Mini
		Torque
		NA cm.N Mini
		RECOMMENDED TORQUES
		Mating
		NA cm.N
		Panel nut
		NA cm.N
		Clamp nut
		NA cm.N

CONNECTOR PARTS:	MATERIALS	FINISH	(all values are given in micrometers)
BODY	BRASS	NICKEL 2	
OUTER CONTACT	BRASS	NICKEL 2	
CENTER CONTACT	BRASS	GOLD 0.2 OVER NICKEL 2	
INSULATOR	POLYPROPYLENE	-	
GASKET	-	-	
OTHERS PIECES	BRASS	NICKEL 2	

ISSUE 0812 B00	CREATION DATE 16/01/1997	FILE PART-NUMBER 94-0106-662
--------------------------	------------------------------------	--



GERALD U

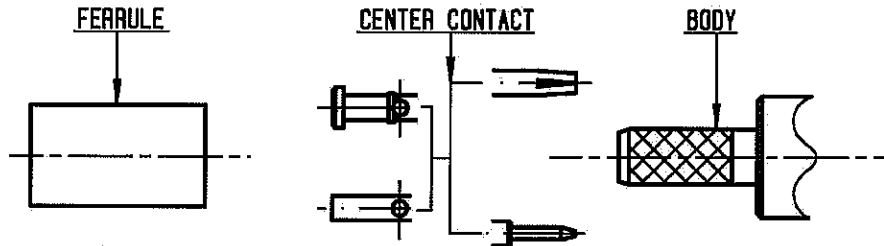
The information given here is subject to change without notice.
Design changes may be in order to improve the product.

Connect to the future



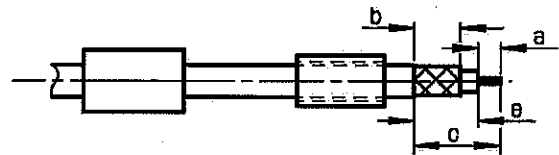
R142.098.170

ISSUE 0812B00 SERIES BNC 75-COM



①

Slide ferrule onto cable
Strip the cable .

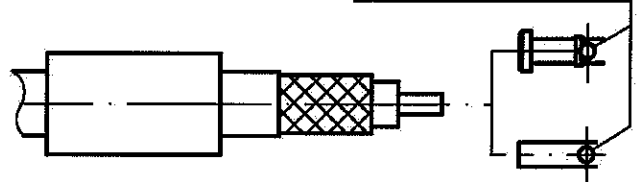


Stripping	a	b	c	d	e
inch	0.157	0.256	0.512	0	0.354
mm	4	6.5	13		9

②

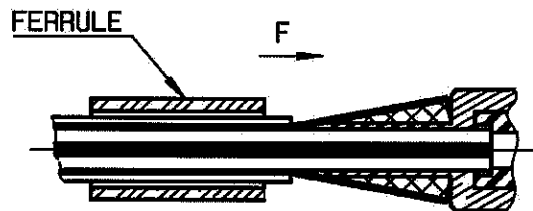
Slide center contact on until it bottoms against cable dielectric .
Solder or crimp center contact .
Crimping tool : R282 223 000 (Hex. : 1.73)
or R282 293 000 (M22520/5-01)
+ dies R282 235 013 (M22520/5-13)

SOLDER / CRIMPING



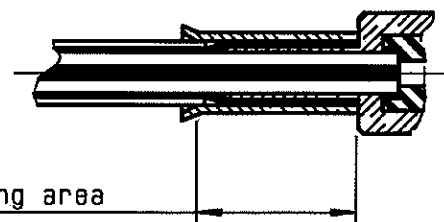
③

Fan the braid .
Slide cable into the body until bottoms against insulator .
Slide ferrule over the braid .
(In direction F)



④

Crimp the ferrule with crimping tool R 282 223 000 (Hex. : 6.48) or crimping tool R282 293 000 (M22520/5-01) + dies R282 235 013 (M22520/5-13)
Cut excess of braid if necessary .



Crimping area